

# CR2025 LITHIUM MANGANESE DIOXIDE



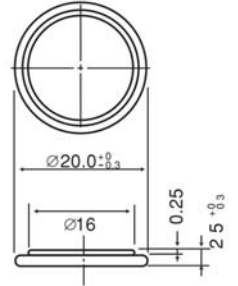
### Features & Benefits

- Good pulse capability
- High discharge characteristics
- Stable voltage level during discharge
- Long-term reliability

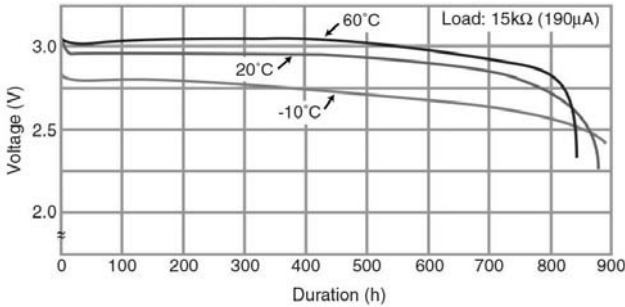
### Specifications

|                        |               |
|------------------------|---------------|
| Nominal Capacity:      | 165 mAh       |
| Nominal Voltage:       | 3V            |
| Weight:                | 2.3g          |
| Operating Temperature: | -30°C - +60°C |

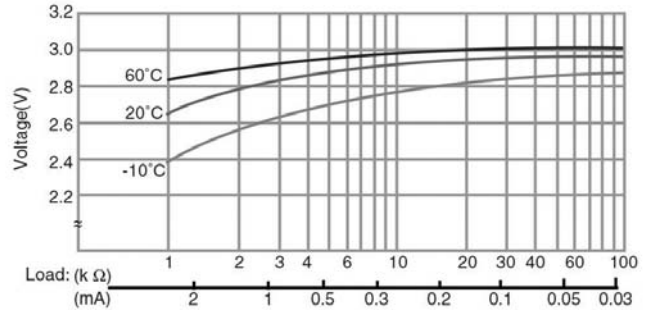
### Dimensions



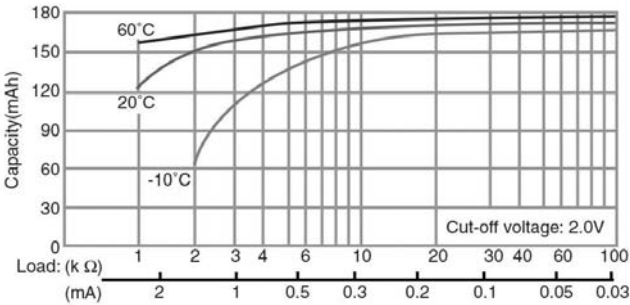
### Temperature Characteristics



### Operating Voltage vs. Load Resistance (voltage at 50% discharge depth)



### Capacity vs. Load Resistance



### WARNING

Serious harm in as little as 2-hours if swallowed. **KEEP AWAY FROM CHILDREN.** Seek immediate medical help if swallowed. Have the doctor call the poison center at 1-(800) 498 8666 for US and Canada. International: 303-389-1300

Product manufacturers should design their products to meet the safety requirements of Annex I of UL60065 or equivalent standards.

For more information on how Panasonic can assist you with your battery power solution needs call **877-726-2228**, visit [www.na.industrial.panasonic.com/products/batteries](http://www.na.industrial.panasonic.com/products/batteries) or e-mail [oembatteries@us.panasonic.com](mailto:oembatteries@us.panasonic.com).

The data in this document is for descriptive purposes only and is not intended to make or imply any guarantee or warranty.